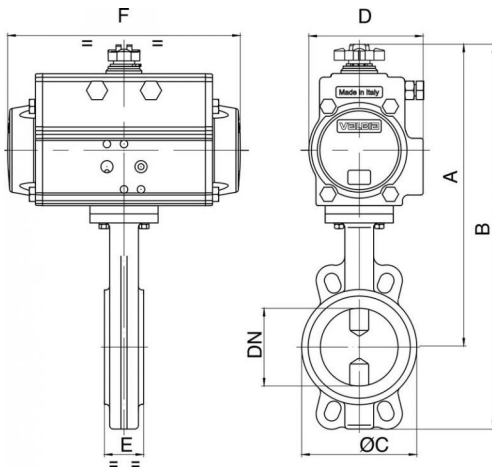




Absperrklappe Typ "WAFER" PN16, Gehäuse in Eisenguss G250 + Expositid-Anstrich, Scheibe GGG40 vernickelt, EPDM- oder NBR-Sitz, mit Antrieb.



| | | | | | | | | | | |
|------|----|-------|-------|-------|-------|-------|-------|--------|--------|--------|
| PN | | 16 | 16 | 16 | 16 | 16 | 16 | 16 | 16 | 16 |
| A | mm | 255 | 267 | 281 | 315 | 327 | 355 | 434 | 482 | 541 |
| B | mm | 326 | 345 | 370 | 417 | 450 | 493 | 602 | 689 | 784 |
| Ø C | mm | 100 | 120 | 127 | 161 | 190 | 215 | 268 | 325 | 400 |
| D | mm | 71 | 71 | 81 | 95 | 95 | 106 | 137 | 148 | 164 |
| E | mm | 43 | 46 | 46 | 52 | 56 | 56 | 60 | 68 | 78 |
| F | mm | 141 | 141 | 164 | 210 | 210 | 241 | 333 | 372 | 435 |
| ACT. | | DA 52 | DA 52 | DA 63 | DA 75 | DA 75 | DA 85 | DA 115 | DA 125 | DA 140 |
| RI | | 3836 | 3836 | 3838 | 3839 | 3840 | 3841 | 3965 | 3865 | 3868 |

| | | | | | | | | | | |
|------|-----|-------|-------|-------|-------|--------|--------|--------|--------|--------|
| PN | bar | 16 | 16 | 16 | 16 | 16 | 16 | 16 | 16 | 16 |
| A | mm | 266 | 279 | 312 | 328 | 354 | 366 | 469 | 524 | 672 |
| B | mm | 338 | 357 | 401 | 430 | 477 | 504 | 637 | 731 | 915 |
| Ø C | mm | 100 | 120 | 127 | 161 | 190 | 215 | 268 | 325 | 400 |
| D | mm | 81 | 81 | 106 | 106 | 123 | 123 | 164 | 186 | 213 |
| E | mm | 43 | 46 | 46 | 52 | 56 | 56 | 60 | 68 | 78 |
| F | mm | 164 | 164 | 241 | 241 | 275 | 275 | 435 | 500 | 493 |
| ACT. | | SR 63 | SR 63 | SR 85 | SR 85 | SR 100 | SR 100 | SR 140 | SR 160 | SR 180 |
| RI | | 3843 | 3843 | 3844 | 3840 | 3846 | 3847 | 3848 | 3867 | 3309 |